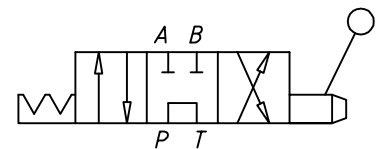


Discription:

The flushing block is a bi-directional manual flow control device for aiding the flushing of hydraulic systems with a manifold interface conforming (4 port only). Flow can be metered towards either control port by rotating the lever about the central position. Fluid cleanliness should be measured prior and during use with an inline contamination monitoring device to ensure effective and correct level are achieved. Contact our sales team for further details on externally piloted manifold interfaces, filtration and flushing procedures.

Technical details.

1. Max. operating pressure 210 Bar
2. Main housing material AL. Alloy
3. Mounting fasteners M8 x 30mm
4. Weight of flushing block 1 Kg
5. Suitable for mineral oils



G-SPOOL
HYDRAULIC SYMBOL

DO NOT SCALE DRAWING

DRN	PAC	Servocontrols & Hydraulics (I) Pvt.Ltd. Survey No.683,Industrial Estate, Udyambag Belgaum 590 008 Ph:0831-5202251 Fax : 0831-2484496	DATE	22-10-20	SCALE
CKD	PAC		QTY	1 nos	
APD	RGJ		MTL	-	
		TITLE	DRAWING NO.		ALT
		FLUSHING BLOCK (550) MANUAL LEVER	SC-SV-FB-ML-GA		